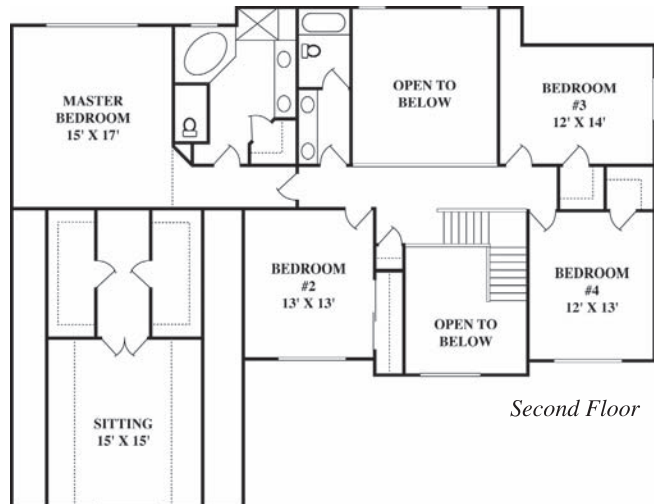
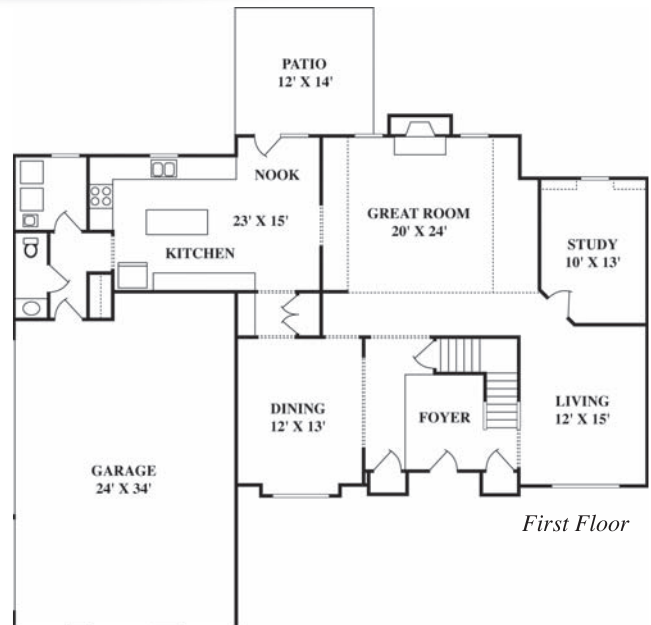


# The Baywood



- Grandly designed 3,385 sq. ft., two-story home
- Transitional floor plan with 4 bedrooms, 2 1/2 baths, and optional 3-car garage
- Striking two story entry flanked by formal living room and dining room
- Large, airy kitchen with island and optional gourmet upgrade
- Butler's pantry with optional wet bar between kitchen and dining room
- Sprawling two-story great room with fireplace
- Private first floor study
- Well-appointed master suite with standard his & hers walk-in closets, large adjoining sitting room, optional cathedral ceiling, and luxury master bath with corner tub and double vanity
- Convenient mud room and laundry off garage
- Customize with Design Center selections



*Family Building for Families<sup>SM</sup>*

Design information for illustration purposes only and is not part of a legal binding contract. Floor plans are the property of JCB Homes, Inc.



*For more information, visit us at [JCBhomes.com](http://JCBhomes.com)*