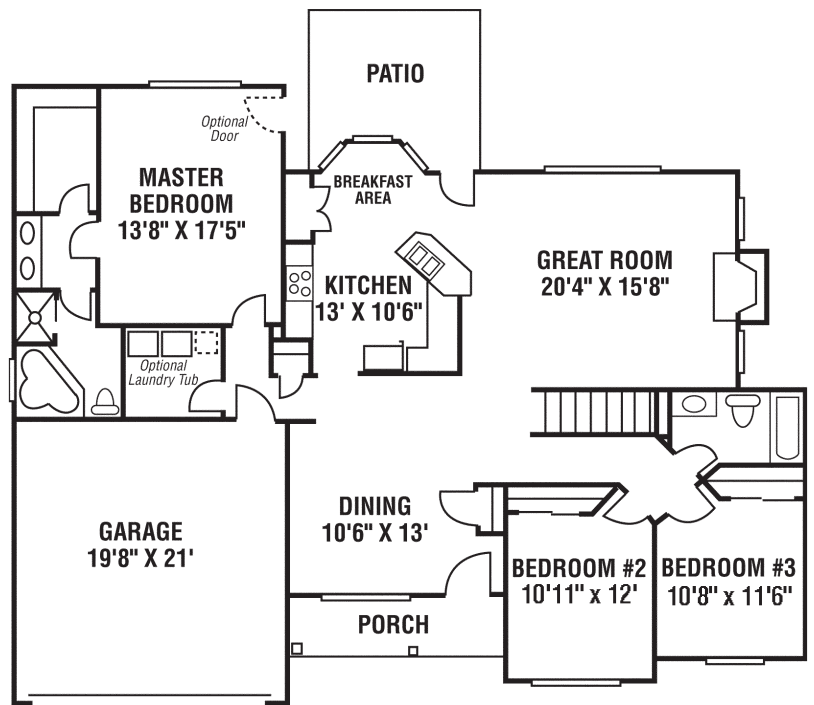


The Olympic



- Winning 1,874 sq. ft. ranch homeplan goes for the gold with 3 bedrooms, 2 baths, and full basement
- Entry opens into great room with fireplace and kitchen with eat-in dining bar
- Breakfast nook bay window looks out onto backyard
- Luxury master suite with walk-in closet, double bowl vanity and corner soaking tub
- Add drama with optional cathedral ceiling in great room, kitchen, breakfast nook, dining room and foyer areas
- Customize with Design Center selections



First Floor



Family Building for FamiliesSM

Design information for illustration purposes only and is not part of a legal binding contract. Floor plans are the property of JCB Homes, Inc.



For more information, visit us at JCBhomes.com