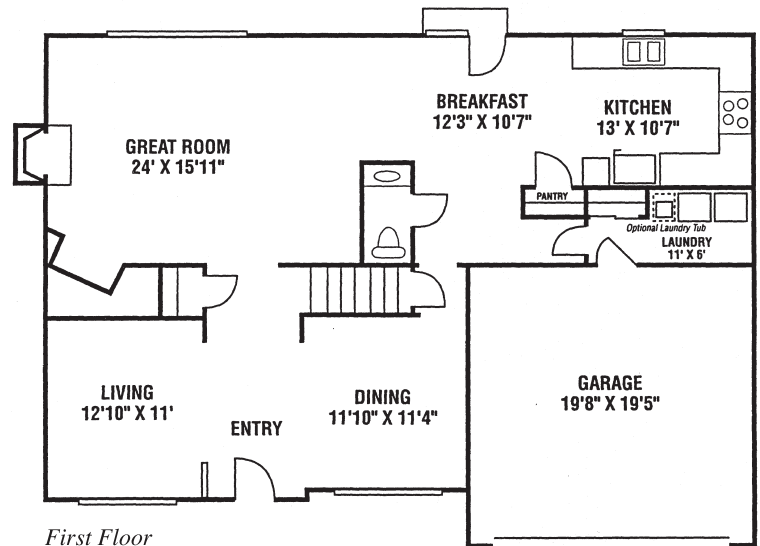


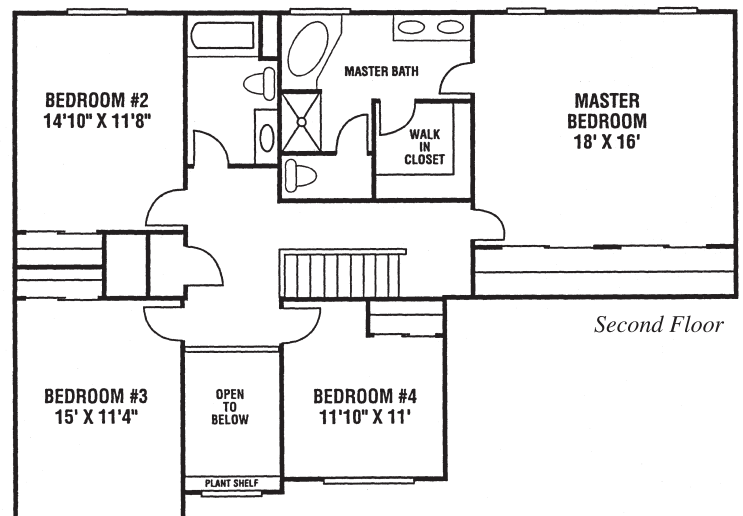
The Wedgewood



- One of our most popular home designs, perfect for families and entertaining
- Roomy 2,690 sq. ft. two story floor plan with 4 bedrooms and 2 1/2 baths
- Eye-catching two story entry transitions to expansive great room with built-in corner media/entertainment center
- Formal living room and dining room
- Private master suite with lots of closet space, optional cathedral ceiling, and luxury master bath
- Choose from multiple elevations
- Optional three-car garage and first floor study
- Customize with Design Center selections



First Floor



Second Floor



Family Building for FamiliesSM

Design information for illustration purposes only and is not part of a legal binding contract. Floor plans are the property of JCB Homes, Inc.



For more information, visit us at JCBhomes.com