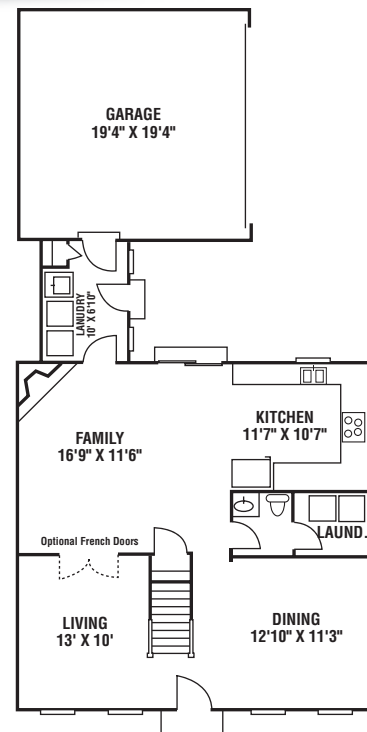


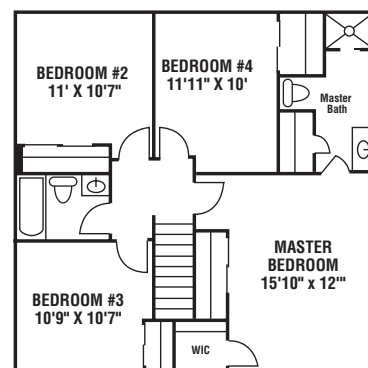
# The Whitley



- Lots of options make this our most popular Village Series home
- Floor plan available from 1,800-2,100 sq. ft. with 3-4 bedrooms and 2 1/2 baths
- Choose from 6 different elevations with 3 variations
- Multiple front porch and brick front options
- Formal living room and dining room
- Large family room opens into kitchen with a breakfast nook, angle bay or peninsula island optional
- 200 sq. ft. master suite with tons of closet space and optional glamour bath
- Rear entry garage
- Customize with Design Center selections



*Family Building for Families<sup>SM</sup>*



Design information for illustration purposes only and is not part of a legal binding contract. Floor plans are the property of JCB Homes, Inc.

*For more information, visit us at [JCBhomes.com](http://JCBhomes.com)*

